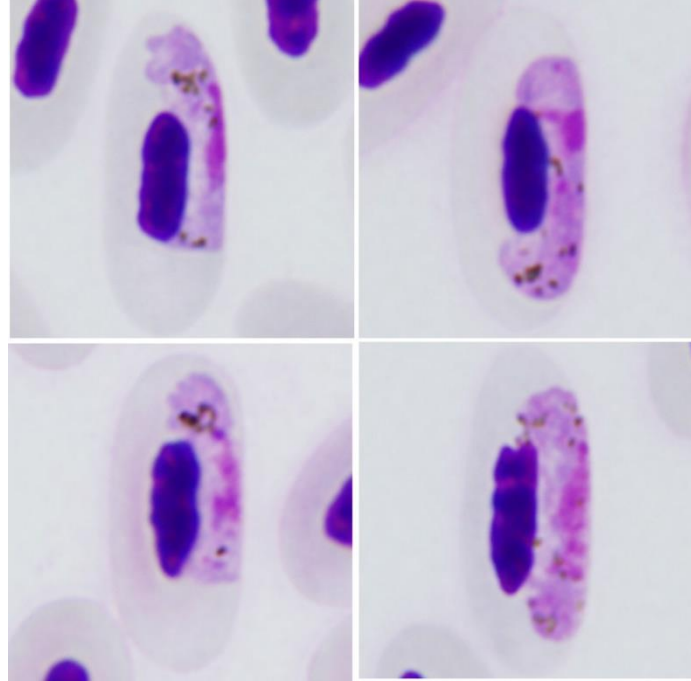


Haemoproteus (Parahaemoproteus) asymmetricus

Valkiūnas, Ilgūnas, Bukauskaitė, Duc, Iezhova, 2021

Typical blood stages:



Important diagnostic characters of blood stages:

Advanced growing gametocytes were closely appressed to the erythrocyte nuclei, they were often seen adhering slightly to one end to the erythrocyte envelope. Advanced growing gametocytes were closely appressed both to the nuclei and envelope of erythrocytes, they were often located asymmetrically in regard of erythrocyte nuclei, a characteristic feature of this species development. The macrogametocyte cytoplasm stains relatively pale in comparison to microgametocytes. Fully-grown gametocytes are small, the largest forms do not fill the erythrocytes up to their poles. Gametocyte nuclei were predominantly of central position or close to the central position.

Mitochondrial cytochrome b sequences:

hTUPHI01

Avian hosts and distribution:

Type host - *Turdus philomelos*

The lineage hTUPHI01 has been reported in the Austria, Bulgaria, Lithuania, North-western Iberia, Portugal, Russia (Kaliningrad and Ekaterinburg districts), Serbia, Transcaucasia, Western Greater Caucasus.