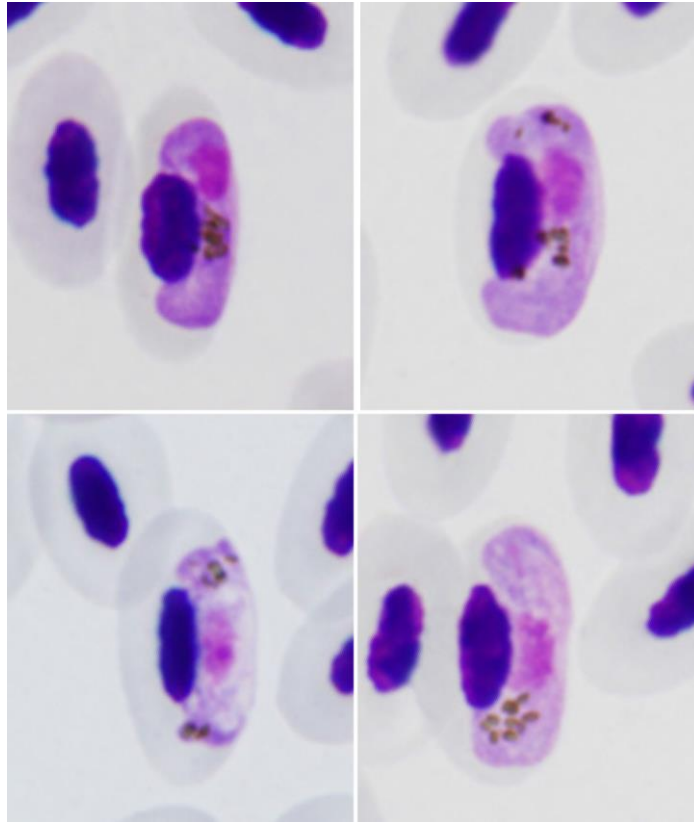


*Haemoproteus (Parahaemoproteus) homogeneae*

Valkiūnas, Ilgūnas, Bukauskaitė, Chagas, Bernotienė, Himmel, Harl, Weissenböck, Iezhova, 2019

**Typical blood stages:**



**Important diagnostic characters of blood stages:**

The cytoplasm of growing macrogametocytes is markedly homogeneous in appearance, which is a characteristic feature of this species. Fully-grown gametocytes are small, with even or slightly wavy outline; they slightly enclose nuclei of erythrocytes, but do not fill the erythrocytes up to their poles. The parasite nucleus is compact, relatively large. Pigment granules are usually roundish, small (< 0.5  $\mu\text{m}$ ), tend to group in one focus or several foci.

**Mitochondrial cytochrome b sequences:**

hSYAT16

**Avian hosts and distribution:**

Type avian host – *Sylvia atricapilla*

The lineage hSYAT16 has been reported only in the Eurasian blackcap type host in Europe.