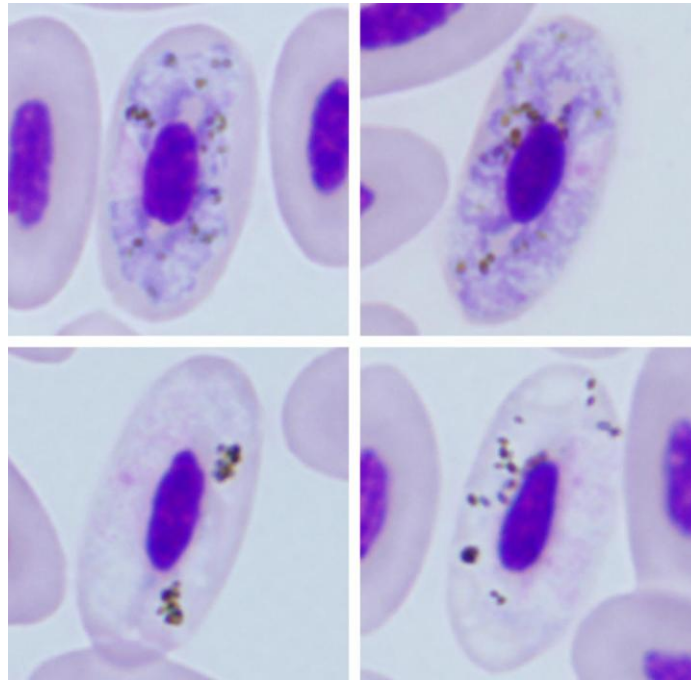


Haemoproteus (Parahaemoproteus) homohandai Valkiūnas, Pendl, Olias, 2017

Typical blood stages:



Important diagnostic characters of blood stages:

A parasite of species of the Psittaciformes whose advanced macrogametocytes are always in touch with erythrocyte nuclei, but not with erythrocyte envelope, they do not fill erythrocytes up to their poles; these are distinctive characteristic features of this species' development. As parasite develops, gametocytes extend around nuclei of erythrocytes, markedly enclosing them with their ends and encircling nuclei completely; they finally occupy nearly entire cytoplasmic. Fully-grown gametocytes are associated with nuclei and envelope of erythrocytes, filling erythrocytes up to their poles space in host cells. Fully-grown gametocytes are circumnuclear. Association of growing microgametocytes with erythrocyte nuclei is less evident than in macrogametocytes.

Mitochondrial cytochrome b sequences:

hARCHL01, TROAED19 and H8

Avian hosts and distribution:

Type avian host – *Ara chloropterus*.

Distribution: According to GenBank data, an identical *cytb* lineage was reported from a *Troglodytes aedon* in Peru. Because of the recent import of the infected Red-and-green macaw to Austria, it is most likely that this infection is of South American origin. Records outside of South America are unknown.