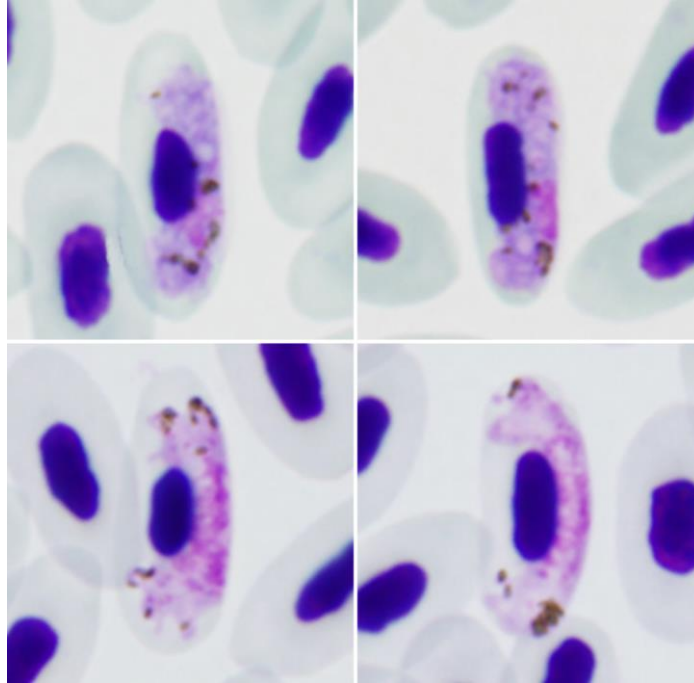


Haemoproteus (Parahaemoproteus) homominutus

Valkiūnas, Ilgūnas, Bukauskaitė, Chagas, Bernotienė, Himmel, Harl, Weissenböck, Iezhova, 2019

Typical blood stages:



Important diagnostic characters of blood stages:

Growing and fully-grown gametocytes only slightly enclose the nucleus with their ends and slightly displace the nucleus laterally. Growing gametocytes, which do not touch the envelope of erythrocytes are present. Fully-grown gametocytes are closely appressed to the nucleus and envelope of erythrocytes. One readily visible roundish vacuole is present in the cytoplasm in the majority of macrogametocytes, a characteristic feature of this species development. Gametocyte outline varies from even to amoeboid. Fully-grown gametocytes are of medium size. Pigment granules are roundish, mainly of small size (on average about 15).

Mitochondrial cytochrome b sequences:

hCUKI1

Avian hosts and distribution:

Type host: *Turdus viscivorus*.

Type locality: Labanoras Regional Park, Švenčionys district, Lithuania.