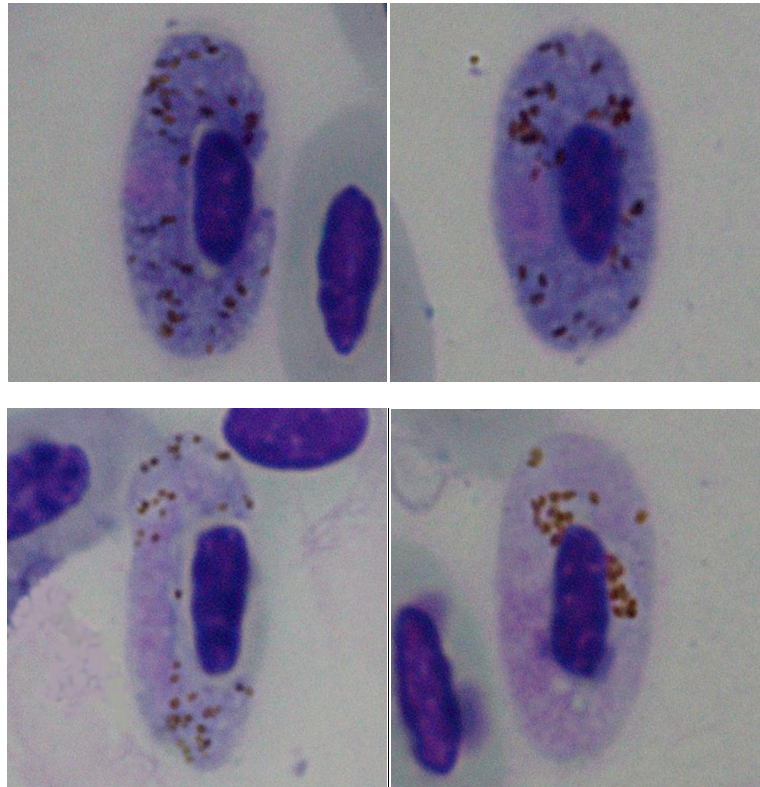


Haemoproteus (Parahaemoproteus) homovelans Dimitrov, Zehtindjiev, Bensch, Ilieva, Iezhova, Valkiūnas, 2014

Typical blood stages:



Important diagnostic characters of blood stages:

Gametocytes grow along the erythrocyte nucleus, enclosing the nucleus with one end often surrounding nucleus asymmetrically in relation to erythrocyte poles. Growing forms often (in approximately 80% of gametocytes) do not touch erythrocyte nucleus, forming a cleft. Fully-grown gametocytes encircle nucleus completely and occupy all cytoplasmic space in erythrocyte. Pigment granules small randomly scattered throughout cytoplasm. Volutin granules absent. Infected erythrocytes hypertrophied in length, width and area.

Mitochondrial cytochrome b sequences:

PICAN02

Avian hosts and distribution:

Type avian host – *Picus canus*.

It has been recorded only in Grey-faced Woodpecker from Bulgaria (southeast Europe).