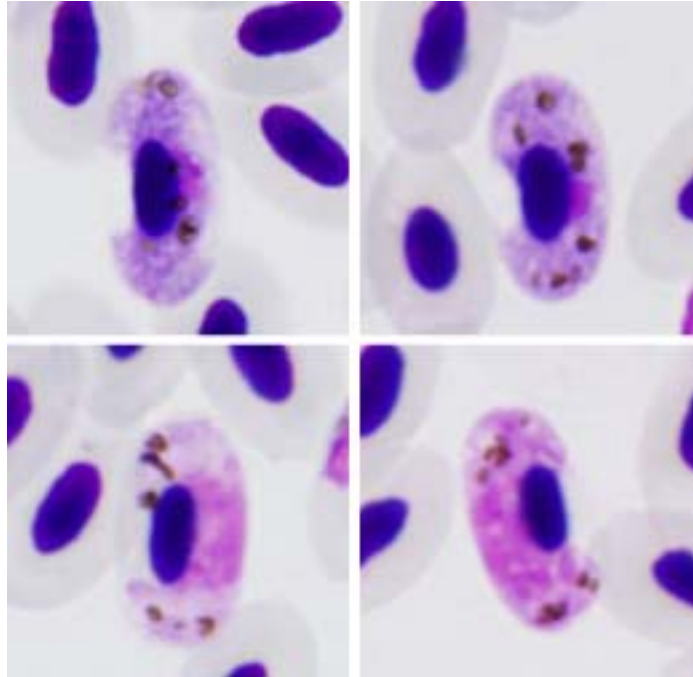


Haemoproteus (Parahaemoproteus) lanii Mello, 1936

Typical blood stages:



Important diagnostic characters of blood stages:

A parasite of species of the Passeriformes whose gametocytes grow around the nuclei of infected erythrocytes and sometimes completely encircle the nuclei. Medium grown gametocytes are closely appressed to the nuclei of infected erythrocytes. The nucleus of macrogametocyte is in a median position and is usually closely appressed to the nucleus of erythrocyte. Pigment granules are of medium (0.5 to 1.0 μm) and large (1.0 to 1.5 μm) size.

Mitochondrial cytochrome b sequences:

RB1, RBS2, RBS4

Avian hosts and distribution:

Type avian host – *Lanius collurio*.

Distribution: Palearctic, Ethiopian and Oriental zoogeographical regions.