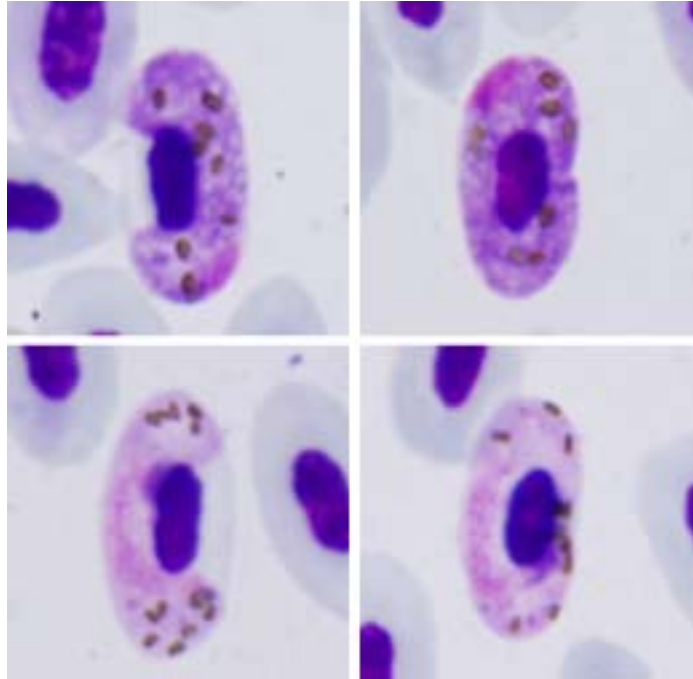


Haemoproteus (Parahaemoproteus) magnus Valkiūnas and Iezhova, 1992

Typical blood stages:



Important diagnostic characters of blood stages:

A parasite of species of the Passeriformes whose gametocytes grow around the nuclei of infected erythrocytes and can completely encircle the nuclei. Medium and fully-grown gametocytes are closely appressed to the nuclei and envelope of erythrocytes. Dumbbell-shaped gametocytes do not occur. Rod-like large (1.0 to 1.5 μm) pigment granules are present in gametocytes.

Mitochondrial cytochrome b sequences:

ROFI1

Avian hosts and distribution:

Type avian host – *Fringilla coelebs*.

Distribution: in Europe. The prevalence of infection in this bird does not exceed 5% during the breeding period on the Curonian Spit, the type locality of this species.