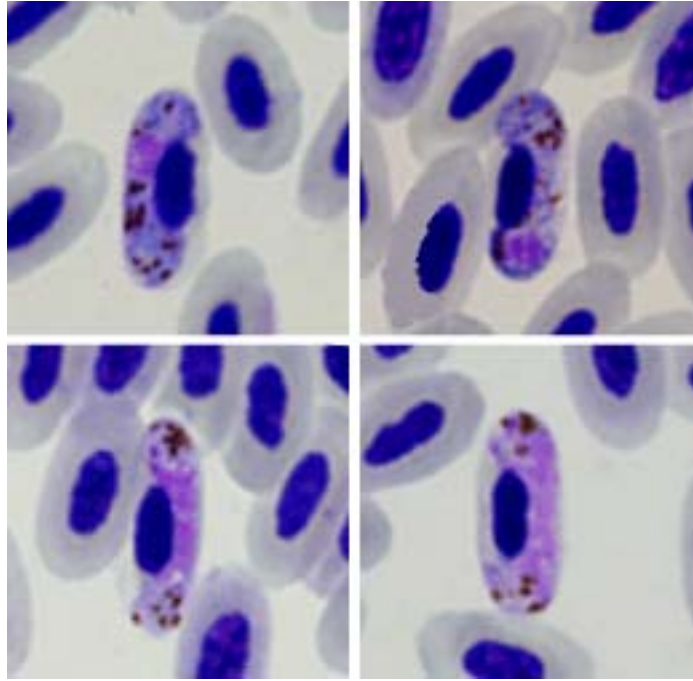


Haemoproteus (Parahaemoproteus) majoris (Laveran, 1902)

Typical blood stages:



Important diagnostic characters of blood stages:

A parasite of species of the Passeriformes whose gametocytes grow around the nuclei of infected erythrocytes, but do not encircle them completely. Gametocytes adhere to the nuclei and the envelope of erythrocytes. Dumbbell-shaped gametocytes are present among macrogametocytes, and they represent over 10% of the total number of the growing macrogametocytes. Pigment granules are

usually roundish in form, of medium (0.5 to 1.0 μm) and sometimes small ($<0.5 \mu\text{m}$) size, with about 10 per gametocyte on average. A species difficult for identification; it can be distinguished from the similar species of haemoproteids of birds belonging to the Passeriformes only on the basis of a detailed analysis of a set of characters.

Mitochondrial cytochrome b sequences:

CCF5, CWT4, PARUS1, PHSIB1, WW2

Avian hosts and distribution:

Type avian host – *Parus major*.

Distribution: the Holarctic, Ethiopian, and Oriental zoogeographical regions.