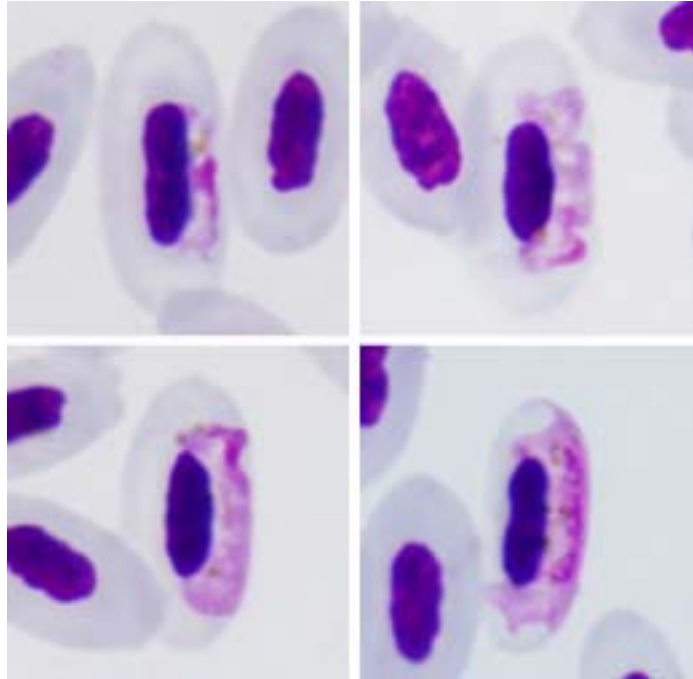


Haemoproteus (Parahaemoproteus) minutus Valkiūnas and Iezhova, 1992

Typical blood stages:



Important diagnostic characters of blood stages:

A parasite of species of the Passeriformes whose gametocytes are closely appressed to the nuclei of infected erythrocytes and only slightly enclose the nuclei with their ends. Medium grown gametocytes, which do not touch the envelope of erythrocytes along their entire margin, are present, and gametocytes with a highly amoeboid or clearly wavy outline are common among them. Fully-grown gametocytes are closely appressed to the nuclei and envelope of erythrocytes but do not fill the erythrocytes up to their poles. Dumbbell-shaped gametocytes are absent. Pigment granules tend to aggregate into compact masses. The average number of pigment granules is about five per gametocyte.

Mitochondrial cytochrome b sequences:

TUHR01, TUPHI01, TURDUS2

Avian hosts and distribution:

Type avian host – *Turdus merula*.

Distribution: the Palearctic.