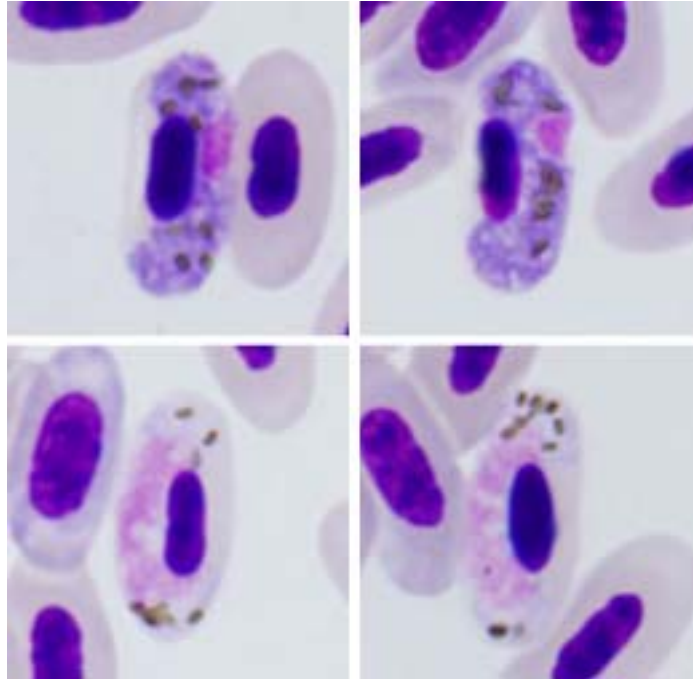


*Haemoproteus (Parahaemoproteus) motacillae* Bennett and Peirce, 1990

**Typical blood stages:**



**Important diagnostic characters of blood stages:**

A parasite of species of the Passeriformes whose gametocytes grow around the nuclei of infected erythrocytes but do not encircle it completely. Gametocytes adhere to the nuclei and envelope of the erythrocytes. Dumbbell-shaped gametocytes are present, and they predominate in growing macrogametocytes. Gametocytes with a highly ameboid outline do not predominate in growing macrogametocytes. Fully-grown gametocytes are closely appressed to the nuclei and envelope of erythrocytes, and fill the erythrocytes up to their poles. Rod-like large (1.0 to 1.5  $\mu\text{m}$ ) pigment granules appear in medium grown gametocytes and predominate in fully-grown gametocytes.

**Mitochondrial cytochrome b sequences:**

YWT1, YWT2, YWT3, YWT5, YWT6

**Avian hosts and distribution:**

Type avian host – *Motacilla flava*.

Morphologically similar gametocytes have been recorded in *Anthus campestris*, *A. trivialis*, *A. hodgsoni*, *Motacilla alba*, *Dendronanthus indicus*. Cyt *b* gene lineage YWT2 has been registered in *Anthus trivialis*. The lineages YWT1, YWT2, YWT3, YWT5, and YWT6 have been recorded in Bulgaria, Spain and Nigeria.