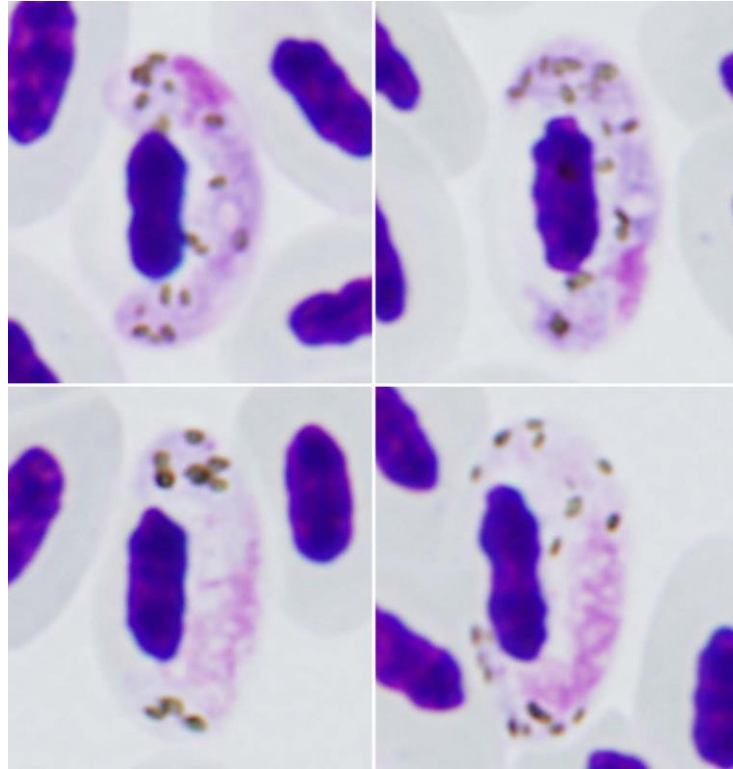


## *Haemoproteus (Parahaemoproteus) palloris*

Dimitrov, Iezhova, Zehtindjiev, Bobeva, Ilieva, Kirilova, Bedev, Sjöholm, Valkiūnas, 2016

### Typical blood stages:



### Important diagnostic characters of blood stages:

Several vacuoles or vacuole-like spaces of variable size present in the majority of gametocytes (80%); Thin cleft-like unfilled space can often be seen between growing gametocyte and erythrocyte nucleus. As parasite grows, gametocyte adheres to erythrocyte envelope, and unfilled space between gametocyte and erythrocyte nucleus start to close gradually.

### Mitochondrial cytochrome b sequences and apicoplast:

hWW1

### Avian hosts and distribution:

Type avian host – *Phylloscopus trochilus*.

Distribution: According to MalAvi database, the lineage hWW1 has been recorded in 10 bird species belonging to 7 families in Europe, Africa and Asia. This lineage might be a widespread host generalist.