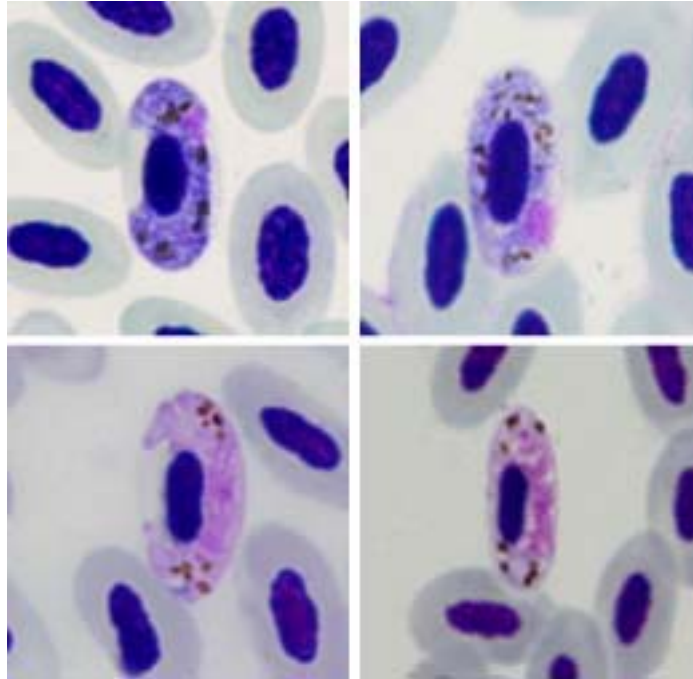


Haemoproteus (Parahaemoproteus) belopolskyi Valkiūnas, 1989

Typical blood stages:



Important diagnostic characters of blood stages:

A parasite of species of the Passeriformes whose gametocytes grow around the nuclei of infected erythrocytes; they markedly enclose the nuclei with their ends and finally can completely encircle the nuclei. Medium grown gametocytes adhere to the nuclei and envelope of infected erythrocytes. Dumbbell-shaped growing gametocytes are common. Pigment granules are of medium size (0.5 to 1.0 μm). The average number of pigment granules in gametocytes varies during development in different vertebrate hosts, but is usually between 5 and 15.

Mitochondrial cytochrome b sequences:

HIICT1, HIICT3, HIICT4, HIICT5, ARW1, RW3, SW1, SW3

Avian hosts and distribution:

Type avian host – *Hippolais icterina*.

The range of vertebrate hosts of *H. belopolskyi* needs to be specified by means of (i) the detailed study of the morphology of gametocytes which develop in different species of birds and (ii) the application of taxonomic characters in the DNA of parasites.

Distribution: Palearctic, Ethiopian and Oriental zoogeographical regions.