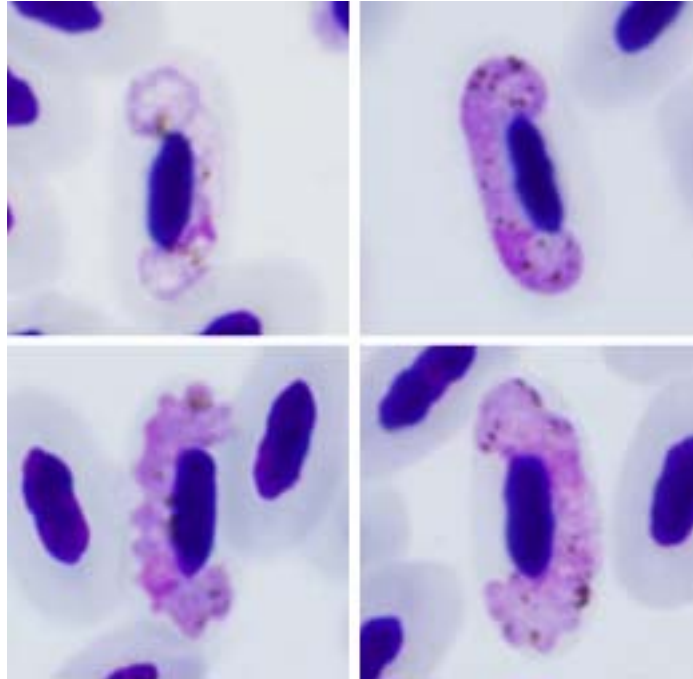


*Haemoproteus (Parahaemoproteus) pallidus* Valkiūnas and Iezhova, 1991

**Typical blood stages:**



**Important diagnostic characters of blood stages:**

A parasite of species of the Passeriformes whose gametocytes grow around the nuclei of infected erythrocytes but do not encircle them completely. Gametocytes are closely appressed to the nuclei of erythrocytes but frequently do not touch the envelope of erythrocytes along their entire margin. Dumbbell-shaped gametocytes are absent. Gametocytes with ameboid outline predominate. The cytoplasm of gametocytes stains exceptionally pale; macro- and microgametocytes are poorly distinguishable on the basis of the intensity of staining the cytoplasm.

**Mitochondrial cytochrome b sequences:**

COLL2, PFC1, SFC3

**Avian hosts and distribution:**

Type avian host – *Ficedula hypoleuca*.

Distribution: the Palearctic and the Afrotropical zoogeographical region.