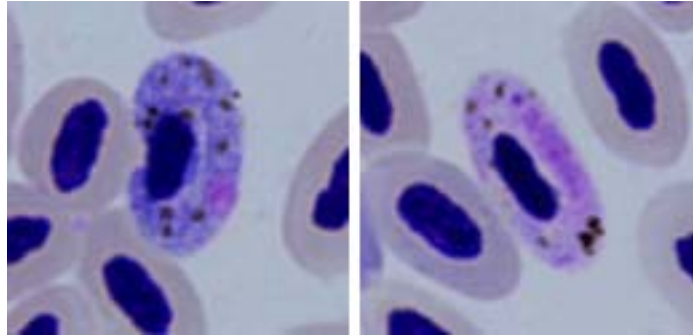


*Haemoproteus (Parahaemoproteus) parabelopolskyi* Valkiūnas, Križanauskienė, Iezhova,

Hellgren, Bensch, 2007

**Typical blood stages:**



**Important diagnostic characters of blood stages:**

A parasite of species of the Passeriformes whose gametocytes grow around the nuclei of infected erythrocytes; they markedly enclose the nuclei with their ends and finally can completely encircle the nuclei. Mode of growth, position in infected erythrocytes, and other morphological features of macrogametocytes indistinguishable from same stages of *H. belopolskyi* as described by Valkiūnas (2005), with 1 exception. Greatest limit of variation and arithmetic mean of length, width, and area of nuclei of macrogametocytes of *H. belopolskyi* significantly greater than same features of *H. parabelopolskyi*.

**Mitochondrial cytochrome b sequences:**

SYAT01, SYAT02, SYAT07, SYAT11, SYAT16, SYBOR01, SYBOR03, SYNIS1

**Avian hosts and distribution:**

Type avian host – *Sylvia atricapilla*.

Type locality: The Curonian Spit in the Baltic Sea.

Distribution: the Palearctic and the Afrotropical zoogeographical region.