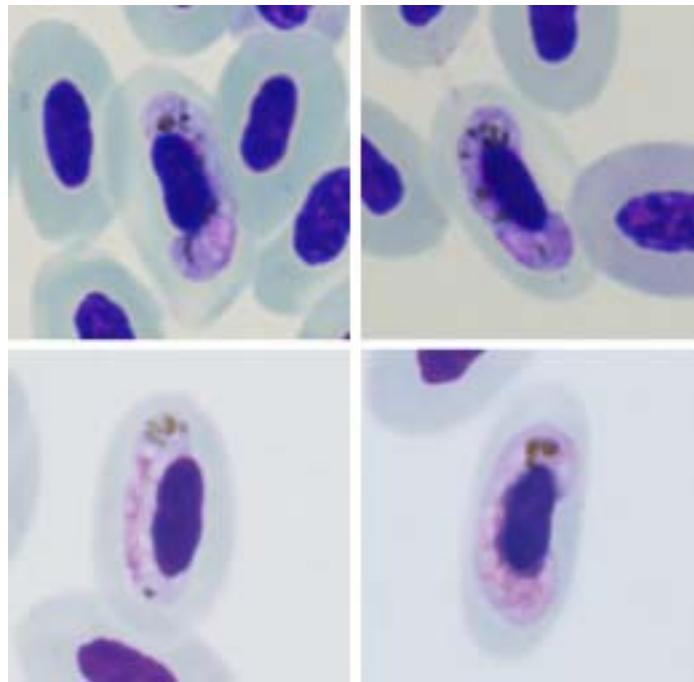


Haemoproteus (Parahaemoproteus) paranucleophilus Iezhova, Dodge, Sehgal, Smith,

Valkiūnas, 2010

Typical blood stages:



Important diagnostic characters of blood stages:

A parasite of species of the Passeriformes whose early stages of gametocytes closely appressed to erythrocyte nuclei but do not touch envelopes of erythrocytes along their entire margin. Macrogametocytes extend around nuclei of erythrocytes, with slender halteridial bodies, and even or slightly irregular outlines. Gametocytes closely appressed to nuclei of erythrocytes but do not touch envelope of erythrocytes along entire margin; slightly displace nuclei of erythrocytes laterally and enclose nuclei up to three-fourths of their circumference. Even fully-grown gametocytes do not extend to envelope of erythrocytes and do not fill erythrocytes up to their poles.

Mitochondrial cytochrome b sequences:

MALRUB01

Avian hosts and distribution:

Type avian host – *Malimbus rubricollis*.

Haemoproteus paranucleophilus was recorded in Uganda.