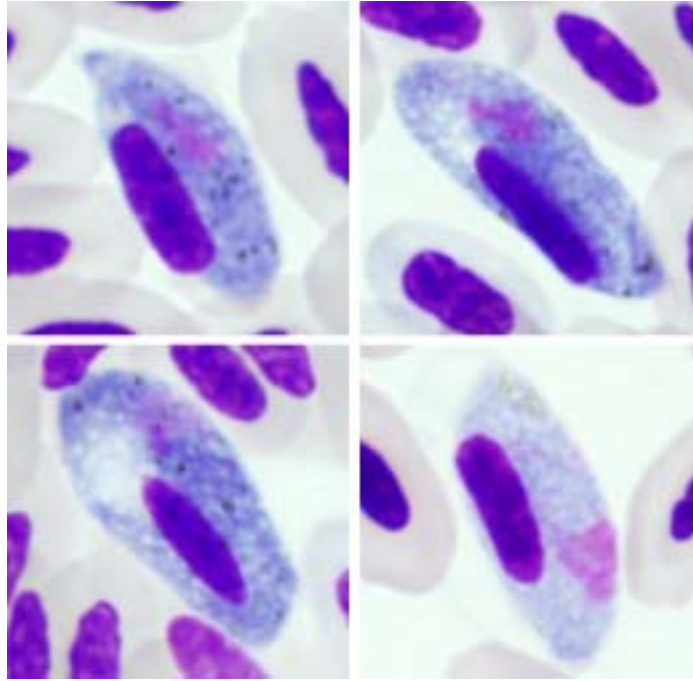


*Haemoproteus (Parahaemoproteus) sacharovi* (Novy and MacNeal 1904)

**Typical blood stages:**



**Important diagnostic characters of blood stages:**

A parasite of species of the Columbiformes whose fully-grown gametocytes are highly pleomorphic, they are outwardly similar to gametocytes of *Leucocytozoon* spp. and cause marked deformation of infected erythrocytes. The average width of fully grown gametocytes is greater than 5  $\mu$ m.

**Mitochondrial cytochrome b sequences:**

MODO1

**Avian hosts and distribution:**

Type avian host – *Zenaida macroura*.

Type locality is Michigan, USA. Distribution: the Nearctic, Neotropical, Ethiopian and Oriental zoogeographical region and Southern Palearctic. This parasite is common in tropics and subtropics. No records from Australia so far.