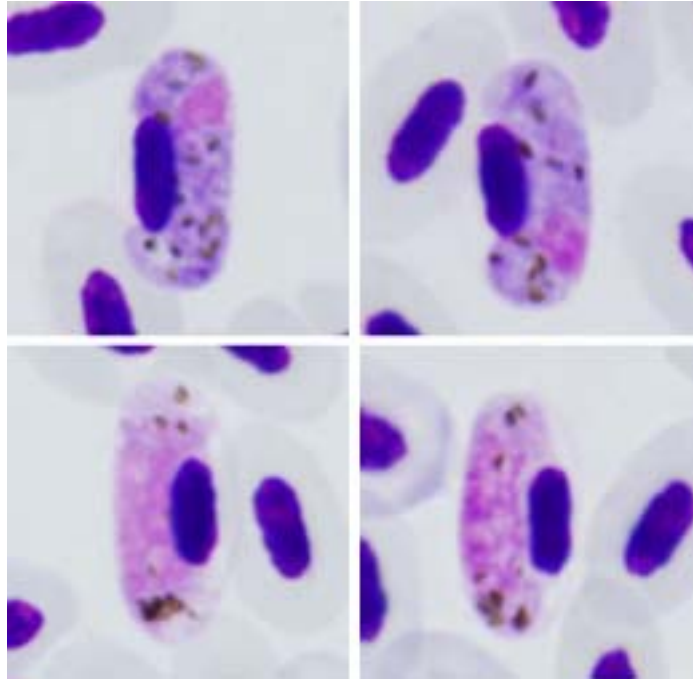


Haemoproteus (Parahaemoproteus) tartakovskyi Valkiūnas, 1986

Typical blood stages:



Important diagnostic characters of blood stages:

A parasite of species of the Passeriformes whose gametocytes markedly displace the nuclei of infected erythrocytes and finally can sometimes enucleate the host cells. The average width of fully-grown gametocytes is greater than 4.5 μm . Infected erythrocytes are significantly hypertrophied in width but unchanged in length.

Mitochondrial cytochrome b sequences:

ALARV01, ALARV02, ALARV03, HAWF1, SISKIN1

Avian hosts and distribution:

Type avian host – *Loxia curvirostra*.

Additional vertebrate hosts are *Coccothraustes coccothraustes*, *Spinus spinus*.

Distribution – the Palearctic.