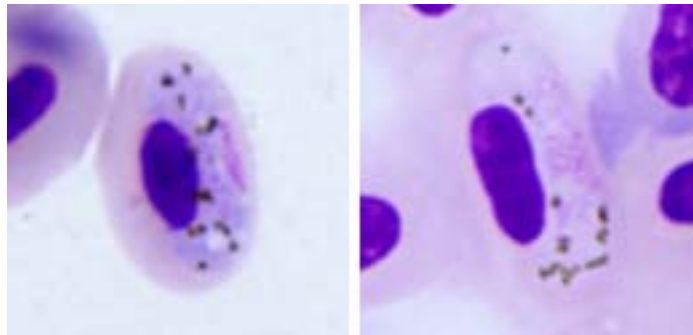


Haemoproteus (Parahaemoproteus) vacuolatus Valkiūnas, Iezhova, Loiseau,

Chasar, Smith, Sehgal, 2008

Typical blood stages:



Important diagnostic characters of blood stages:

One clear vacuole is present in each advanced macrogametocyte; the nuclei of fully-grown macrogametocytes are variable in form and have no permanent position in gametocytes.

Mitochondrial cytochrome b sequences:

ANLAT02

Avian hosts and distribution:

Type avian host – *Andropadus latirostris*.

This morphospecies and its lineage ANLAT02 have been recorded in Ghana and Cameroon so far. It is probable that it is transmitted throughout the range of the yellow-whiskered greenbul in Africa.