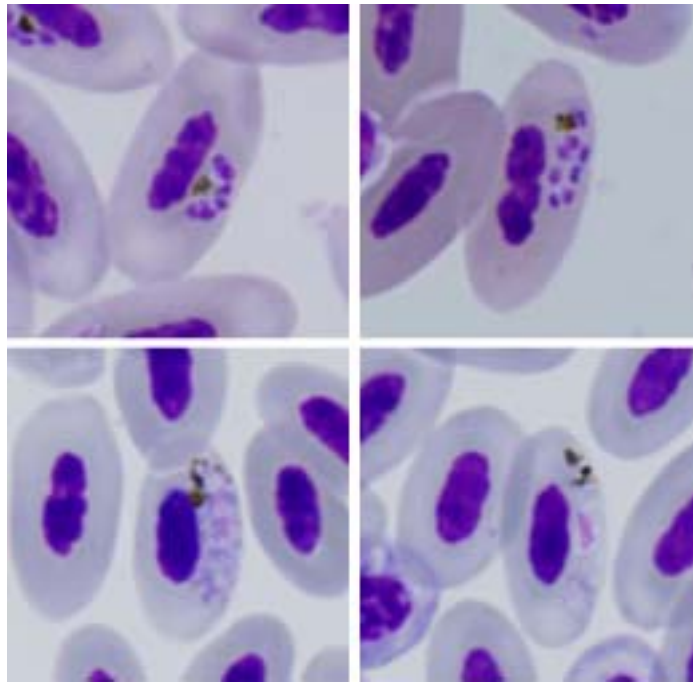


Plasmodium (Novyella) ashfordi Valkiūnas, Zehtindjiev, Hellgren,
Ilieva, Iezhova, Bensch, 2007

Typical blood stages:



Important diagnostic characters of blood stages:

Fan-like mature erythrocytic meronts containing seven to eight merozoites are common. Pigment granules in gametocytes are clumped together into a prominent group, which usually is terminal in position in the gametocytes. Macrogametocytes possess coarsely granular cytoplasm and diffuse nuclei. The nuclei of microgametocytes are relatively compact.

Mitochondrial cytochrome b sequences:

GRW02

Avian hosts and distribution:

Type avian host – *Acrocephalus arundinaceus*.

Mitochondrial cytochrome b sequences GRW02 has previously been recorded in adult warblers sampled in Europe: great reed warbler, reed warbler, and garden warbler, willow warbler, melodious warbler, and also in an African resident species, the lesser swamp warbler in western Africa.