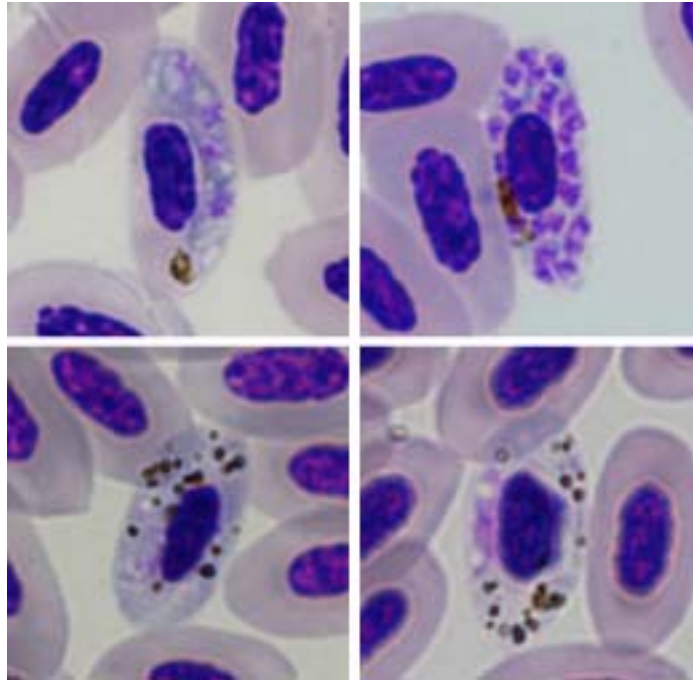


Plasmodium (Giovannolaia) circumflexum (Kikuth, 1931)

Typical blood stages:



Important diagnostic characters of blood stages:

Meronts and gametocytes grow around the nuclei of infected erythrocytes and can completely encircle the nuclei. Pigment granules in growing erythrocytic meront are aggregated into a small loose clump near one end of the parasite. Small (<1.0 μm in diameter) vacuoles are frequently present in erythrocytic meronts and gametocytes. Fully-grown erythrocytic meronts and gametocytes usually do not deform infected erythrocytes and do not displace or only slightly displace their nuclei laterally. Mature erythrocytic meronts contain 8 to 30 (usually 12 to 20) merozoites.

Mitochondrial cytochrome b sequences:

SW5, TURDUS1

Avian hosts and distribution:

Type avian host – *Turdus pilaris*.

Additional hosts: numerous species of birds of the orders Anseriformes, Columbiformes, Coraciiformes, Charadriiformes, Falconiformes, Strigiformes, Galliformes, and some others, but particularly of the Passeriformes (over 100 species total). Probably cosmopolitan.