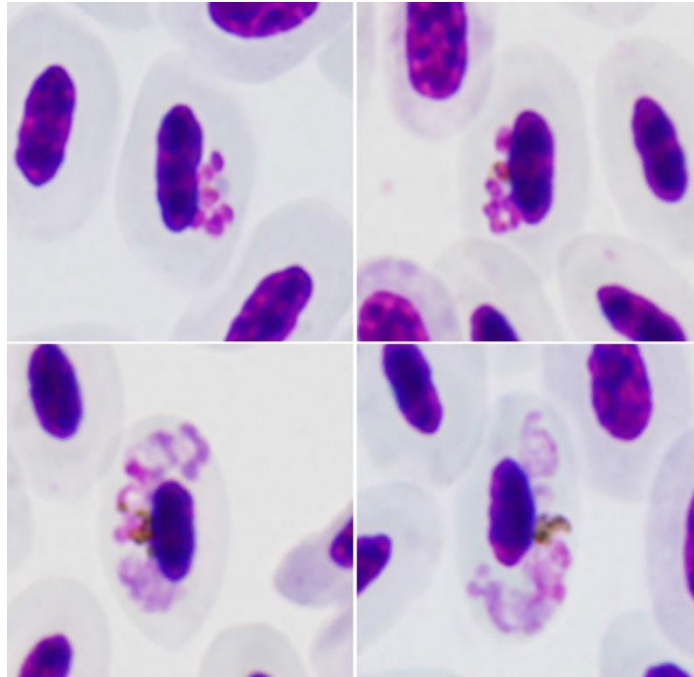


Plasmodium (Novyella) collidatum

Platonova, Aželytė, Iezhova, Ilgūnas, Mukhin, Palinauskas, 2021

Typical blood stages:



Important diagnostic characters of blood stages:

Growing and mature meronts are small, contain 4–8 merozoites and a non-refractive globule is often seen. The cytoplasm of gametocytes is markedly heterogeneous and is unevenly stained: more densely stained portions of the cytoplasm are intermingled with pale stained portions, which look like large vacuole-like pale stained spaces—a characteristic feature of this species. Fully grown gametocytes often do not adhere to the envelope of the erythrocyte and do not fill the poles of erythrocytes. Markedly wavy lobular-like appearance of the pellicle (on the opposite side to erythrocyte nucleus) of mature gametocytes is an important distinctive feature of this species.

Mitochondrial cytochrome b sequences:

pFANTAIL01

Avian hosts and distribution:

Type avian host – *Carpodacus erythrinus*

According to literature data the lineage pFANTAIL01 have been recorded in 18 species of 15 families in 7 orders of naturally infected birds.