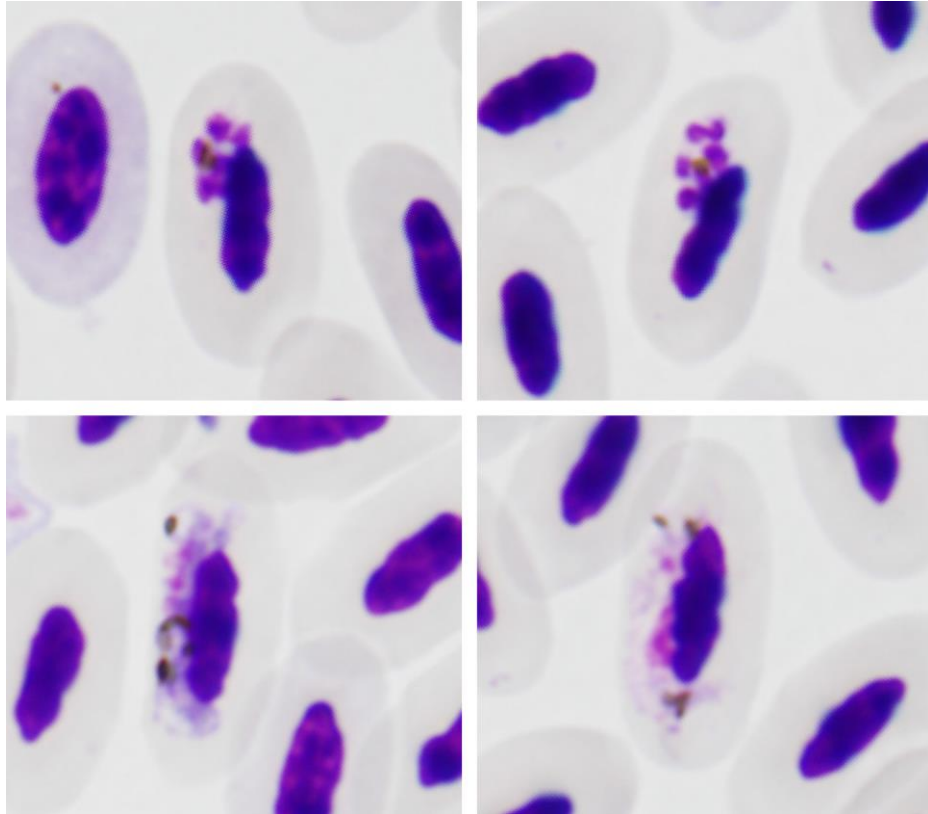


***Plasmodium (Novyella) delichoni***

Valkiūnas, Ilgūnas, Bukauskaitė, Žiegytė, Bernotienė, Jusys, Eigirdas, Fragner, Weißenböck,  
Iezhova, 2016

**Typical blood stages:**



**Important diagnostic characters of blood stages:**

Erythrocytic meronts and gametocytes are strictly nucleophilic, and mature gametocytes possess pigment granules of markedly variable size, including large ones (1  $\mu\text{m}$  in length). Due to these features, *P. delichoni* can be readily distinguished from all described species of avian malaria parasites belonging to subgenus *Novyella*. Additionally, mature erythrocytic merozoites contain a dense clamp of chromatin, a rare character in avian malaria parasites.

**Mitochondrial cytochrome b and apicoplast sequences:**

KU529943 and KU530116, respectively.

**Avian hosts and distribution:**

Type avian host – *Delichon urbicum*.

*Plasmodium delichoni* has been reported in adult house martins, barn swallows and collared flycatchers in Europe after arrival from African wintering grounds.