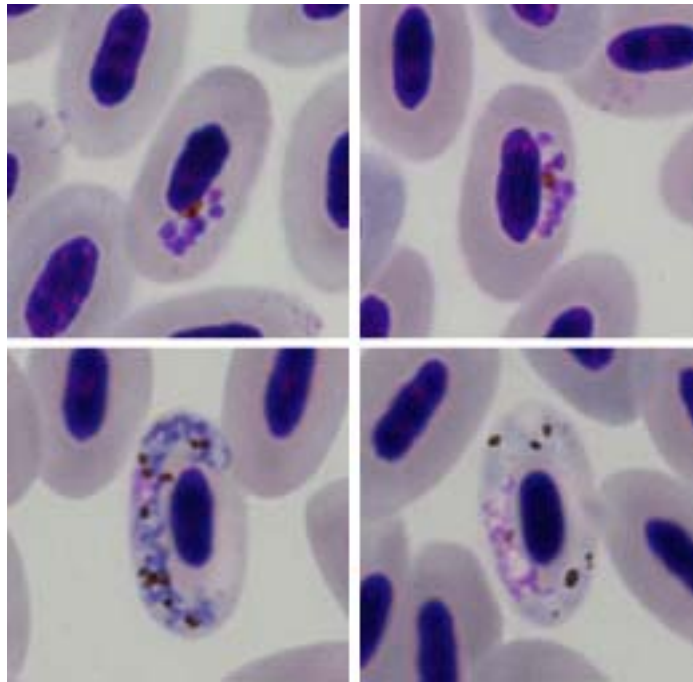


Plasmodium (Novyella) homonucleophilum Ilgūnas, Palinauskas,
Iezhova, Valkiūnas, 2013

Typical blood stages:



Important diagnostic characters of blood stages:

All growing and mature meronts adhere to the nuclei of the infected erythrocytes. Mature meronts produce 7–8 merozoites. Pigment granules are always aggregated into a solid mass, which usually locates close to the parasite margin in mature meronts. Gametocytes are elongated in shape. Outline of gametocytes is irregular. Gametocytes usually do not adhere to nuclei of the infected erythrocytes, but occasionally can touch the nuclei by their amoeboid outgrowths. Mature gametocytes do not fill erythrocytes up their poles, but tend to enclose the nuclei of erythrocytes by their ends.

Mitochondrial cytochrome b sequences:

SW2

Avian hosts and distribution:

Type avian host – *Locustella naevia*.

Type locality is the Curonian Spit in the Baltic Sea. The lineage SW2 has been reported in Nigeria, Sweden, South Korea, Romania, Switzerland. However, it remains unclear if transmission occurs in all these countries.