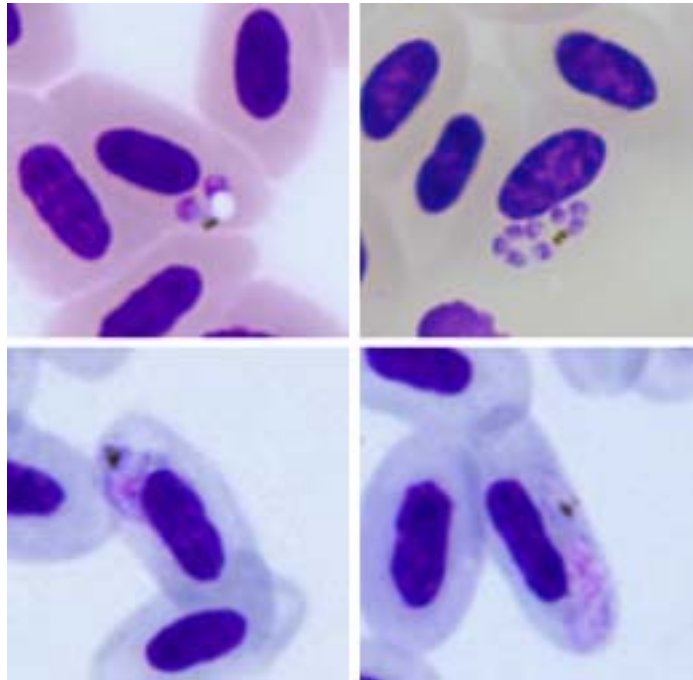


Plasmodium (Novyella) lucens Valkiūnas, Iezhova,
Loiseau ,Smith, Sehgal, 2009

Typical blood stages:



Important diagnostic characters of blood stages:

One prominent vacuole is present in each advanced trophozoite. Binuclear developing meronts are of clear ‘bow tie’ form with a centrally located large vacuole and symmetrically located prominent nuclei. The vacuole gradually disappears in developing meronts. Mature meronts possess six to 12 merozoites. Macrogametocytes are roundish in form; elongated gametocytes are absent. Microgametocytes are elongated in shape. The clearly different shape of its macro- and microgametocytes is a unique feature for avian malaria parasites.

Mitochondrial cytochrome b sequences:

CYAOLI09

Avian hosts and distribution:

Type avian host – *Cyanomitra olivacea*.

This morphospecies and its lineage CYAOLI09 have been recorded in three study sites in Ghana and Cameroon. It is probable that *P. lucens* is transmitted throughout the range of the olive sunbird in African rainforests.