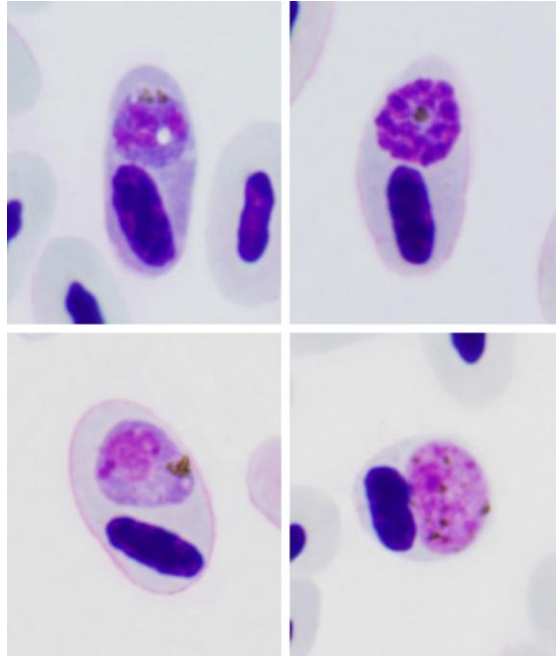


Plasmodium (Haemamoeba) matutinum Huff, 1937

Typical blood stages:



Important diagnostic characters of blood stages:

Growing meronts possess the plentiful cytoplasm and large nuclei. Clearly visible circular vacuoles, which may be up to 1.5 μm in largest diameter are present in many maturing meronts and that is the most readily distinguishable character of this parasite species. Pigment granules are small, dark-brown or black, usually clumped and are difficult to calculate; they do not gather around vacuoles, a characteristic feature of this parasite species. Fullygrown gametocytes are relatively small; they do not exceed 10 μm in their largest diameter, a characteristic feature of this *Haemamoeba* species.

Mitochondrial cytochrome b sequences:

pLINN1

Avian hosts and distribution:

Type avian host – *Turdus migratorius*.

The lineage pLINN1 has been reported in North America, Europe, Asia and New Zealand. It was found in 20 species of birds belonging to 14 families and five orders.