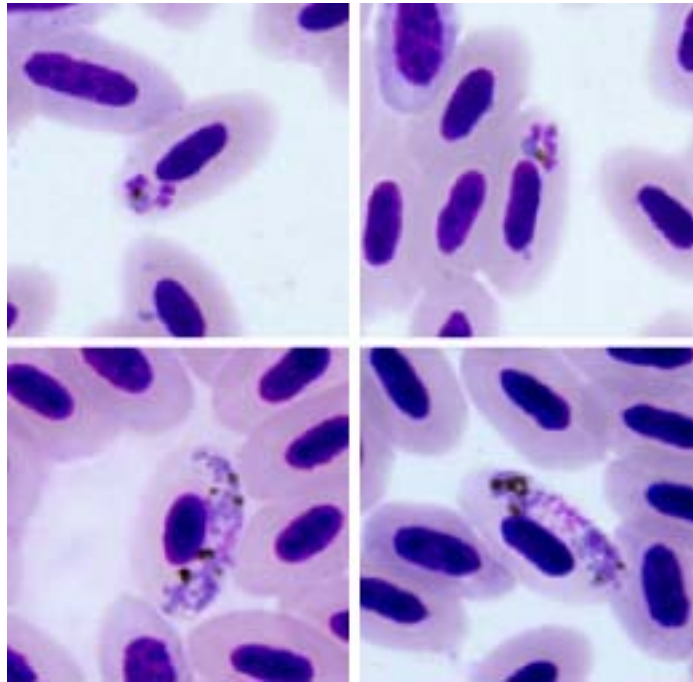


Plasmodium (Novyella) megaglobularis Valkiūnas, Iezhova, Loiseau,

Chasar, Smith, Sehgal, 2008

Typical blood stages:



Important diagnostic characters of blood stages:

One large, blue, non-refractive globule in trophozoites and erythrocytic meronts, and the markedly globular-like appearance of the cytoplasm both in macro- and microgametocytes are characteristic features of this species.

Mitochondrial cytochrome b sequences:

PYSUN1

Avian hosts and distribution:

Type avian host – *Cyanomitra olivacea*.

The identical mitochondrial *cyt b* lineage of *Plasmodium* sp. has been recorded in sunbirds in Nigeria (pygmy sunbird *Hedydipna platura*) and Gabon (live-bellied sunbird *Cinnyris chloropygius*; and olive sunbird). It is probable that *P. megaglobularis* parasitize numerous species of the Nectariniidae in Africa.