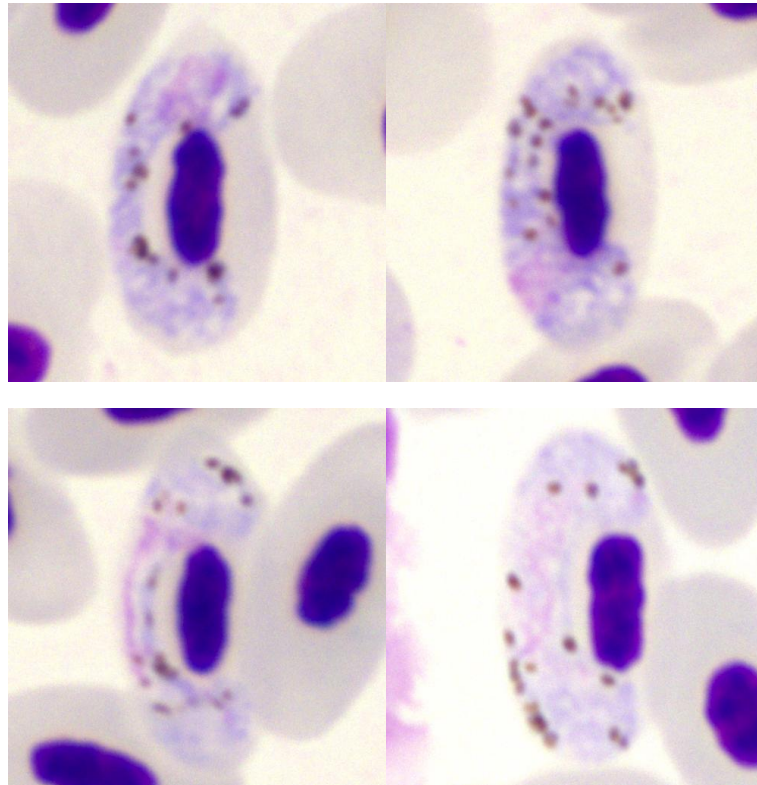


*Haemoproteus (Parahaemoproteus) concavocentralis* Dimitrov, Zehtindjiev, Bensch, Ilieva, Iezhova, Valkiūnas, 2014

**Typical blood stages:**



**Important diagnostic characters of blood stages:**

Cytoplasm pale-blue stained with Giemsa. Several vacuoles or vacuole-like spaces of different size and position present in the majority of gametocytes. Growing gametocyte usually adheres to erythrocyte envelope but does not touch erythrocyte nucleus resulting in presence of a broad cleft between gametocyte and erythrocyte nucleus. Cleft is broader in gametocyte centre and narrower at gametocyte edges resulting in a concave shape of the growing parasite. As parasite develops, gametocyte fills up space on the poles of erythrocyte and then gradually adheres to erythrocyte nucleus and close the cleft.

**Mitochondrial cytochrome b sequences:**

GQ396708

**Avian hosts and distribution:**

Type avian host – *Coccothraustes coccothraustes*.

It has been recorded only in Hawfinches from Bulgaria (southeast Europe).