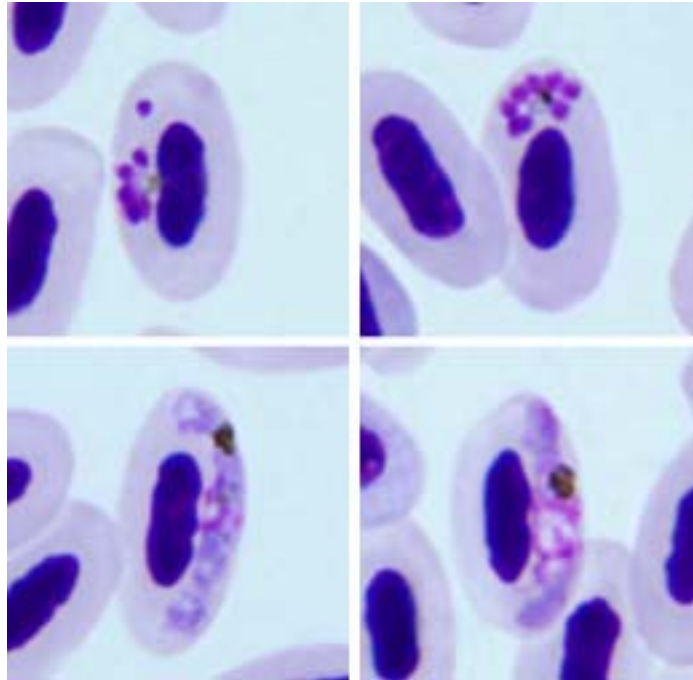


Plasmodium (Novyella) vaughani Novy and MacNeal, 1904

Typical blood stages:



Important diagnostic characters of blood stages:

Growing trophozoites are ameboid in outline and they do not contain clearly defined vacuoles. Ameboid outgrowths of trophozoites do not exceed the main body of the trophozoites in length. Erythrocytic meronts and gametocytes, which do not touch the nuclei of infected erythrocytes, are common. The number of merozoites in mature erythrocytic meronts varies from four to eight, but more frequently is equal to four or six. One clearly defined round refractive colourless globule is frequently seen in meronts. Young gametocytes do not possess long thread-like outgrowths. Canary is susceptible not to all subspecies.

Mitochondrial cytochrome b sequences:

SYAT05

Avian hosts and distribution:

Type avian host – *Turdus migratorius*.

Additional hosts are numerous species of birds of the orders Anseriformes, Apodiformes, Charadriiformes, Columbiformes, Coraciiformes, Cuculiformes, Piciformes, and some others but particularly of the Passeriformes (over 240 species total). Canary is a good experimental host for the nominal subspecies. Probably cosmopolitan.