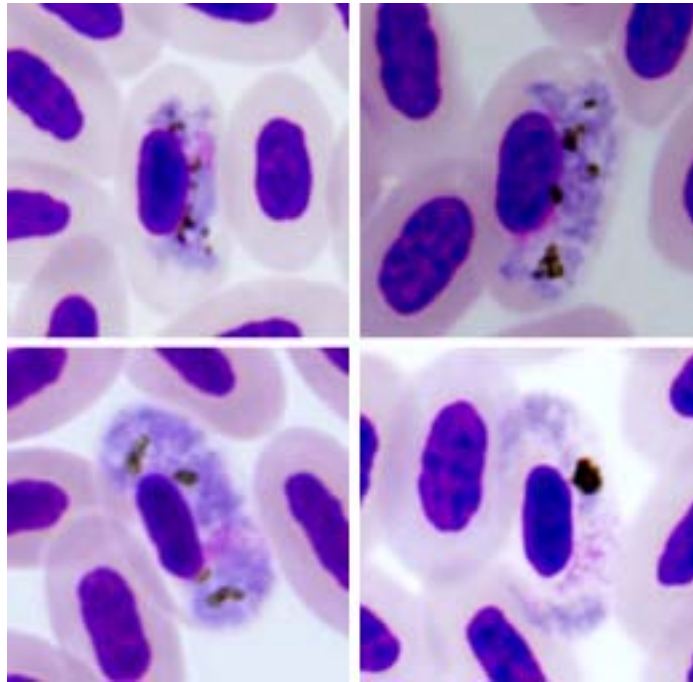


Haemoproteus (Parahaemoproteus) cyanomitrae Iezhova, Valkiūnas,

Loiseau, Smith, Sehgal, 2010

Typical blood stages:



Important diagnostic characters of blood stages:

A parasite of species of the Passeriformes whose growing gametocytes usually do not touch envelope of erythrocytes along entire margin, a characteristic feature in development of this species. Growing dumbbell-shaped gametocytes and advanced halteridial gametocytes, both of which do not touch the envelope of infected erythrocytes along their entire margin are present. Pigment granules are most frequently clamped in 1, or several, groups in gametocytes, with larger group of pigment granules usually located close to one end of the gametocyte; asymmetric position of pigment granules in gametocytes a characteristic feature of this parasite.

Mitochondrial cytochrome b sequences:

CYAOLI03, CYAOLI05, CYAOLI06

Avian hosts and distribution:

Type avian host – *Cyanomitra olivacea*.

According to our study and the GenBank data, this morphospecies and its lineage CYAOLI05 have been recorded in Cameroon, Ghana, Kenya, and Tanzania. The closely related lineages CYAOLI03 and CYAOLI06 have been found in the olive sunbird in Cameroon, Gabon, Ghana, Malawi, and Tanzania. It is probable that *H. cyanomitrae* is transmitted throughout the range of the olive sunbird in Africa.