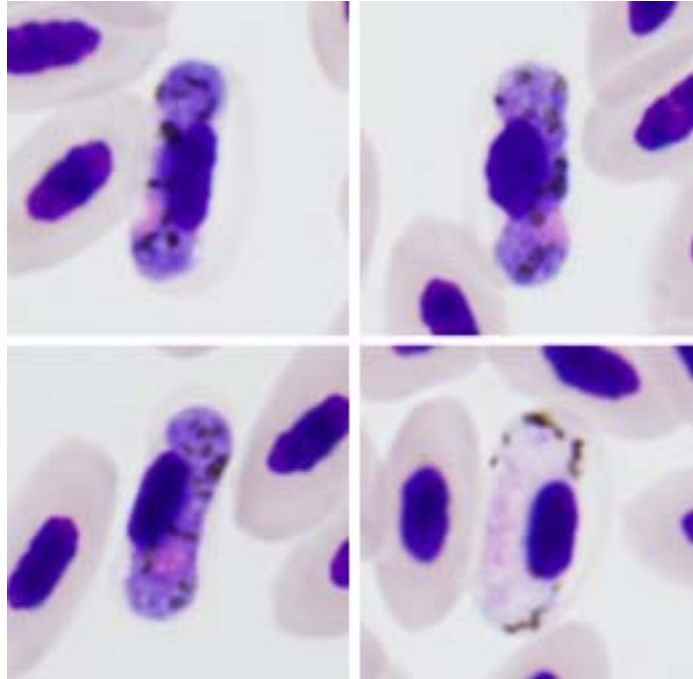


*Haemoproteus (Parahaemoproteus) fringillae* (Labbé, 1894)

**Typical blood stages:**



**Important diagnostic characters of blood stages:**

A parasite of species of the Passeriformes whose gametocytes grow along the nuclei of infected erythrocytes, they slightly displace the nuclei laterally and never encircle them completely. Gametocytes adhere to the nuclei and the envelope of erythrocytes. Dumbbell-shaped gametocytes predominate among growing macrogametocytes and are usually not present among microgametocytes. Fully-grown macrogametocytes often do not fill the erythrocytes up to their poles. Pigment granules are usually of medium (0.5 to 1.0  $\mu\text{m}$ ) and sometimes small ( $<0.5 \mu\text{m}$ ) size; their average number is about 14 per gametocyte.

**Mitochondrial cytochrome b sequences:**

CCF3

**Avian hosts and distribution:**

Type avian host – *Fringillae coelebs*.

This parasite has been recorded in all zoogeographical regions, except the Australian and Antarctic.