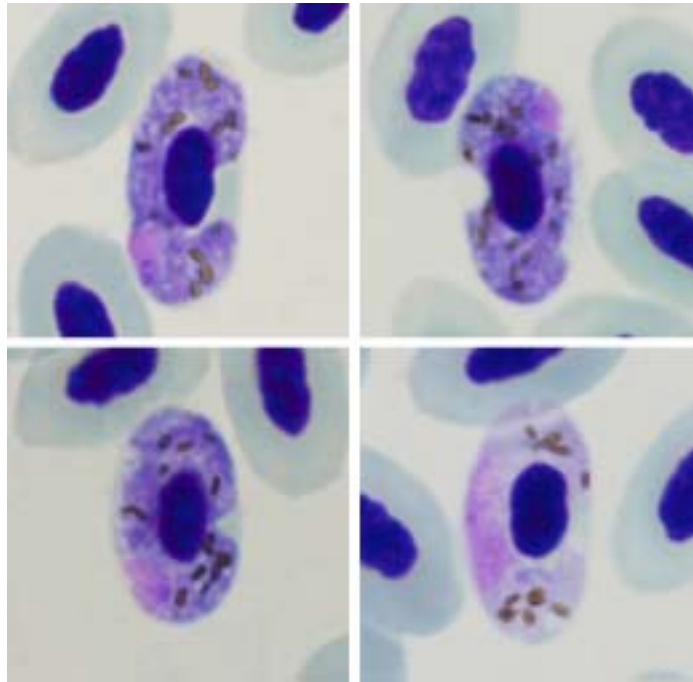


Haemoproteus (Parahaemoproteus) homobelopolskyi Iezhova, Dodge, Sehgal, Smith,

Valkiūnas, 2010

Typical blood stages:



Important diagnostic characters of blood stages:

A parasite of species of the Passeriformes whose gametocytes grow around the nuclei of infected erythrocytes; they markedly enclose the nuclei with their ends and finally can completely encircle the nuclei. Dumbbell-shaped growing gametocytes are common. The average area of macrogametocyte nuclei is $3.8 \pm 0.4 \mu\text{m}$. Average number of pigment granules in microgametocytes is 17.5 ± 2.8 .

Mitochondrial cytochrome b sequences:

PLOMEL01, PLOMEL02

Avian hosts and distribution:

Type avian host – *Ploceus melanocephalus*.

Haemoproteus homobelopolskyi was recorded in Uganda and in Cameroon. It is probable that this parasite has wide distribution in sub-Saharan Africa. So far, this parasite has been recorded only in species of *Ploceus*.