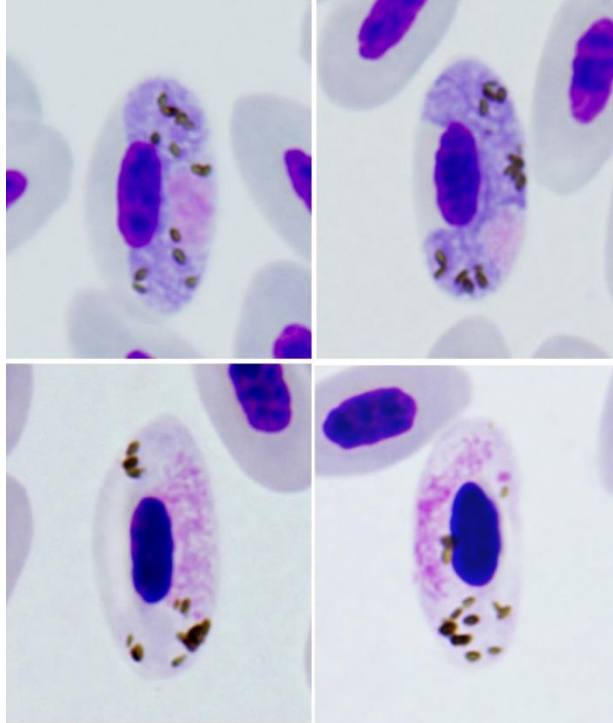


Haemoproteus (Parahaemoproteus) bobricklefsi

Valkiūnas, Iezhova, Duc, Dunn, Bensch, 2024

Typical blood stages:



Important diagnostic characters of blood stages:

Advanced and fully grown gametocytes are closely appressed to the nuclei and envelop of infected erythrocytes; they fill up poles of erythrocytes and slightly displace the nuclei laterally. The parasite nuclei are big, of vague outlines, variable in form and position: the subterminal or close to subterminal position of nuclei predominates (75%), but the strictly central position is also common (25%). The unstable position of nuclei in macrogametocytes is a characteristic feature of this species.

Mitochondrial cytochrome b sequences:

hDUNNO01

Avian hosts and distribution:

Type host - *Prunella modularis*

DNA haplotype networks showed that transmission occurs in Europe and North America. This parasite was found in the dunno in Europe and several species of the Passerellidae in North America. It is probably of Holarctic distribution, with the highest reported prevalence in the UK.