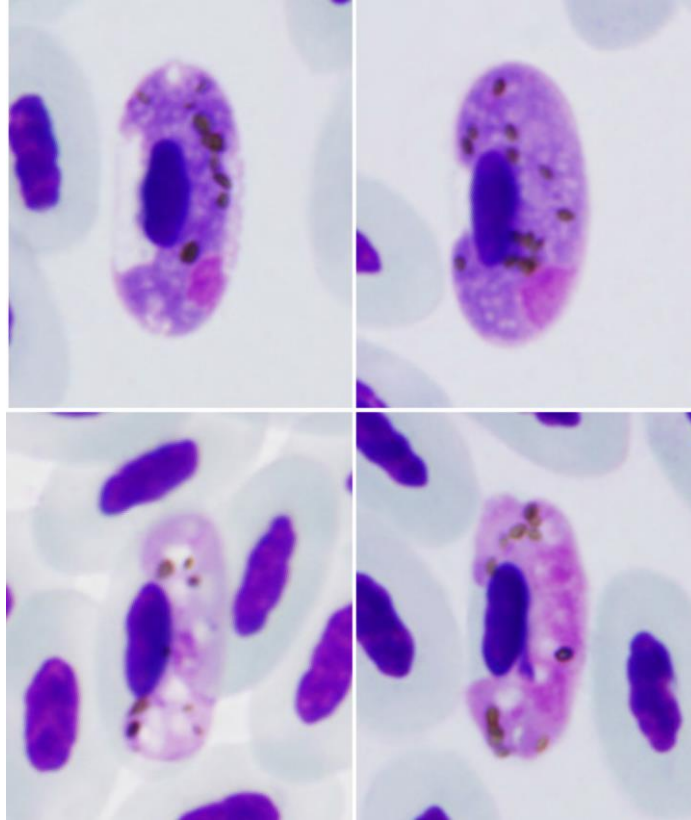


Haemoproteus (Parahaemoproteus) homopicae

Valkiūnas, Ilgūnas, Bukauskaitė, Chagas, Bernotienė, Himmel, Harl, Weissenböck, Iezhova, 2019

Typical blood stages:



Important diagnostic characters of blood stages:

Macrogametocytes grow around the nuclei of erythrocytes, slightly displace the nuclei laterally but usually do not encircle them completely. The dumbbell-shaped gametocytes are common among the growing gametocytes, but are absent among fully-grown forms, which are closely appressed both to the nucleus and envelope of erythrocytes. The parasite nucleus is markedly variable in form, subterminal in position, located close to erythrocyte envelope. The cytoplasm of microgametocytes is markedly vacuolated in growing and fully-grown gametocytes, which is a characteristic feature of this species development.

Mitochondrial cytochrome b sequences:

hGAGLA07

Avian hosts and distribution:

Type avian host – *Garrulus glandarius*.

The lineage hGAGLA07 has been reported only in the type locality - Ventės Ragas, Lithuania.