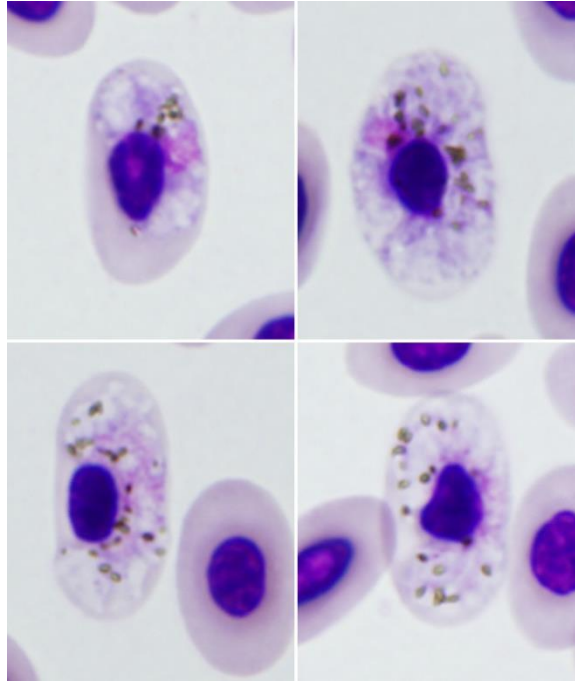


***Haemoproteus (Parahaemoproteus) multivacuolatus***

Harl, Fauchois, Puech, Gey, Arieu, Izac, Weissenböck, Chakarov, Iezhova, Valkiūnas, Duval,  
2024

**Typical blood stages:**



**Important diagnostic characters of blood stages:**

Growing gametocytes often assume asymmetrical positions regarding the nuclei, and this often leads to the appearance of comma-like gametocyte forms. Macrogametocytes are markedly vacuolated, lack volutin granules, and the cytoplasm stains are relatively pale in comparison to microgametocytes, which is a characteristic feature of this parasite. Fully grown gametocytes cause marked enlargement of infected erythrocytes in length and particularly in area in comparison to uninfected erythrocytes, a characteristic feature of this species, which was readily recognizable in blood films even without statistical analysis.

**Mitochondrial cytochrome b sequences:**

hBUBT1

**Avian hosts and distribution:**

Type host – *Buteo buteo*

Gametocytes were found in the type host *Buteo buteo* in Austria, Germany, and France.

Transmission probably occurs throughout the breeding range of *B. buteo*.