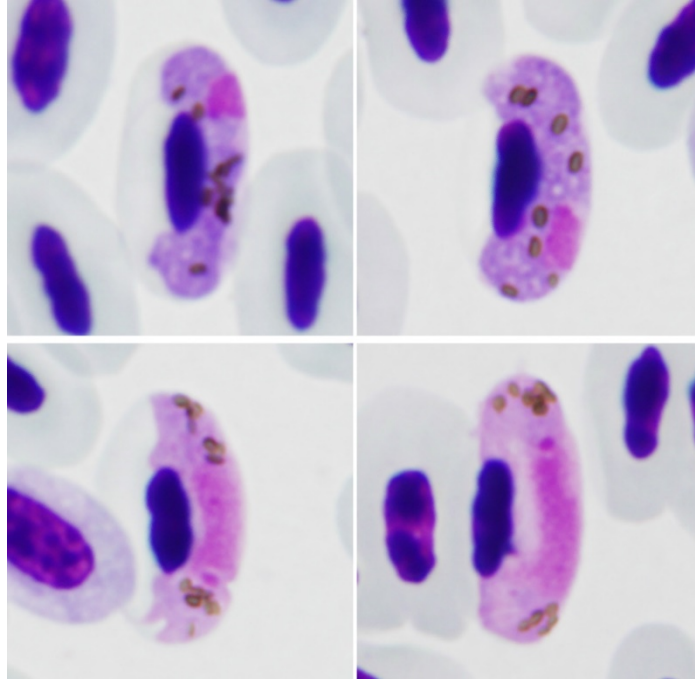


Haemoproteus (Parahaemoproteus) hirundinis

Sergent and Sergent, 1905

Typical blood stages:



Important diagnostic characters of blood stages:

Gametocytes grow around the nucleus of infected erythrocytes, but do not encircle it completely. Medium and fully grown gametocytes adhere to the nucleus and the envelope of erythrocytes. Dumbbell-shaped gametocytes are absent or they represent less than 10% of the total number of growing gametocytes. Fully grown gametocytes fill the erythrocytes up to their poles. Pigment granules vary from small ($<0.5 \mu\text{m}$) to large (1.0 to $1.5 \mu\text{m}$), with about nine per gametocyte on average.

Mitochondrial cytochrome b sequences:

hDELURB2

Avian hosts and distribution:

Type avian host – *Hirundo* sp.

(the type host was identified only to the generic level in the original description)
(Passeriformes).

Delichon urbica – hDELURB1

Type locality - Algeria. Distribution: the Holarctic, Ethiopian and Oriental zoogeographical regions.