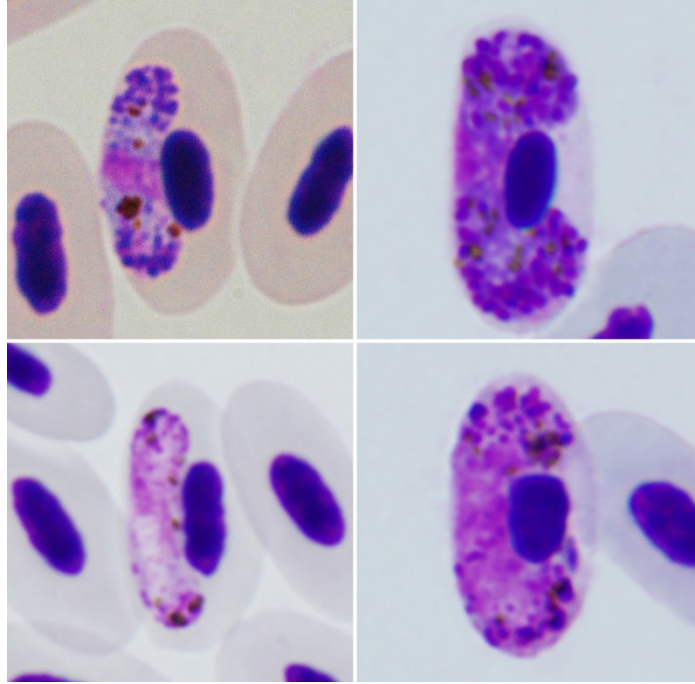


Haemoproteus (Parahaemoproteus) syrnii Mayer, 1910

Typical blood stages:



Important diagnostic characters of blood stages:

A parasite of species of the Strigiformes whose fully grown gametocytes markedly displace the nucleus of infected erythrocytes laterally; they slightly enclose the nucleus with their ends, but as a rule, do not encircle it completely.

Mitochondrial cytochrome b sequences:

hCULKIB01

Avian hosts and distribution:

Type host - *Strix aluco*

Type locality: precise locality is unknown. Lübeck, Germany or Vienna, Austria.

Distribution: This parasite has been recorded in all zoogeographical regions, except Australia and the Antarctic. Most probably, it is cosmopolitan.